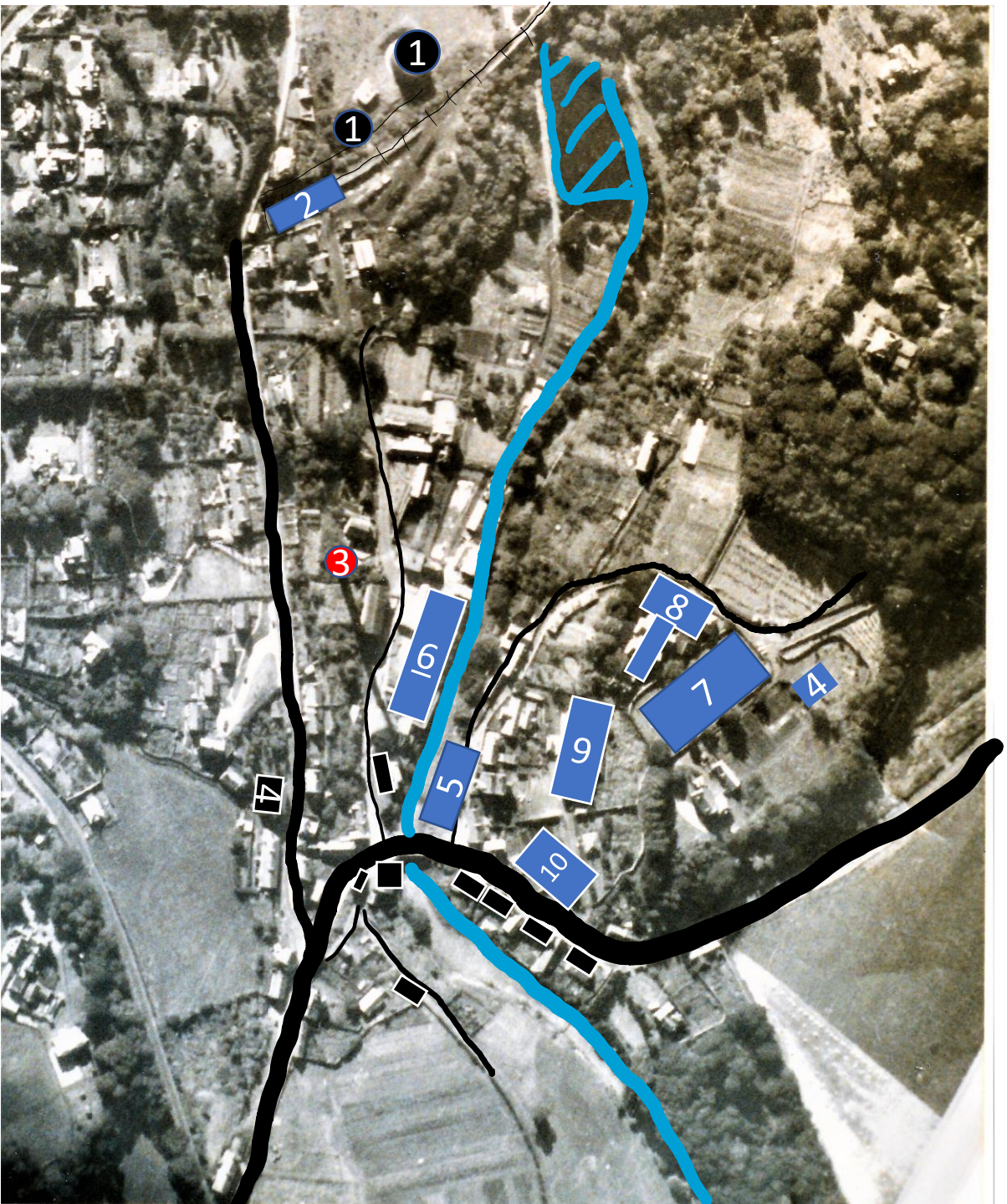


Aerial Photo of Lasswade taken in the mid 20th century



Key

- 1. Gasometers
- 2. Station
- 3. Chimney
- 4. Church
- 5. School Green
- 6. St. Leonard's Mill
- 7. Lasswade Old Kirkyard
- 8. Lasswade Board school
- 9. Primary school
- 10. Forester's Arms

Click on the blue boxes for more information.

Lasswade Station



Polton to Edinburgh/Peebles line. Opened in October 1868. Closed to passengers in 1951 and fully in 1964.

<http://disused-stations.org.uk/l/lasswade/index.shtml>

Click here to [return](#) to the main map

Lasswade Parish Church



Demolished in 1956. Built in 1793 to a design by Robert Adam.

Image at: <https://tour-scotland-photographs.blogspot.com/2014/12/old-photograph-parish-church-lasswade.html>

[Click here to return to the main map](#)

St. Leonard's Paper Mill



A former employee related:

- In the 1950's there were 50-100 staff at the mill.
- There was great camaraderie among the staff.
- The mill would operate 24 hours per day when there were big orders.
- Men tended to operate the machines while women manually counted sheets of paper!

Here's what it looks like now. For pictures of the mill during its working life, click here:

<https://scotlandsplaces.gov.uk/record/hes/171415/laswade-westmill-road-st-leonards-paper-mill/rcahms>

Click here to [return](#) to the main map

Lasswade Old Kirkyard



Gravestones reflecting the industrial heritage of Lasswade.

[Click here to return to the main map](#)

Forester's Arms



Nobby & Tubby of the Forester's Arms
~1914

[High Street, Lasswade, Bonnyrigg, near Loanhead, Midlothian Stock Photo - Alamy](#)

[Click here to return to the main map](#)

School Green



Former residents recalled:

- The Home Guard parading on School Green with broom handles!
- School boys of the village killing rats by the river!
- The old bollards made of stone were great for games of leap-frog.
- Travelling shows pitched up here.

Click here to [return](#) to the main map

Lasswade Board School 1st Year A Class 1950-51



A former pupil reminisced:

- The school dentist was absolutely terrifying!
- During the war the children 'dug for victory' in the school grounds.
- The local pipe band practised in the school.

Click here to [return](#) to the main map

Lasswade School Primary V 1947-48



Click here to [return](#) to the main map